

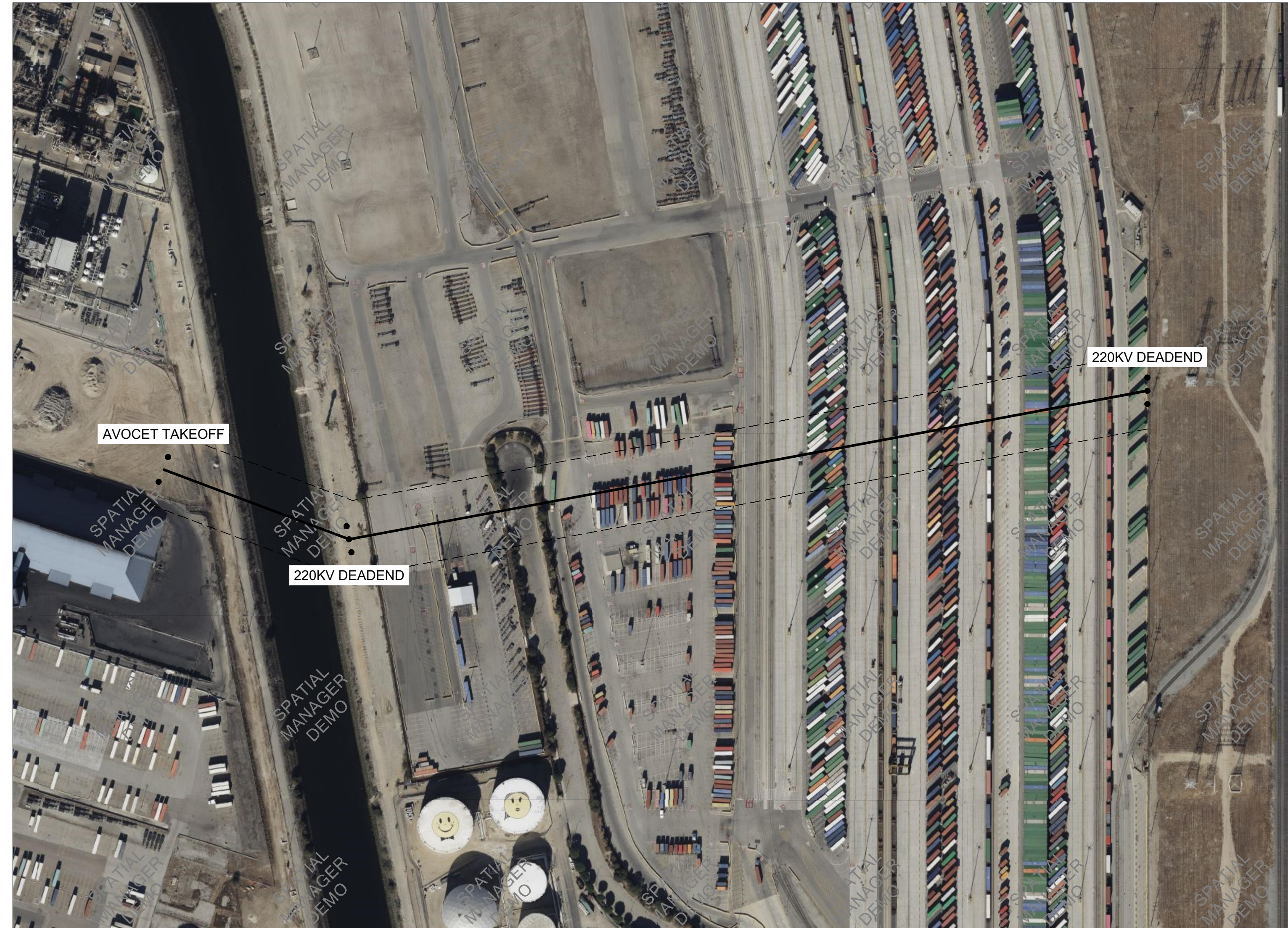
# TENASKA

## AVOCET 220KV INTERCONNECTION PRELIMINARY DESIGN

no.	date	by	ckd	description
1	5/19/22	MPS	JG	PRELIMINARY DESIGN
2	12/15/22	JGC	AR	PRELIMINARY DESIGN
3	4/21/23	JCP	AR	PRELIMINARY DESIGN



VICINITY MAP  
SCALE: N.T.S.

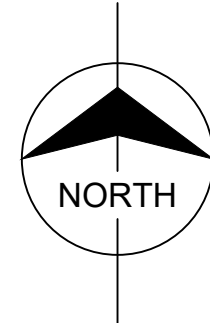


LOCATION PLAN  
SCALE: N.T.S.

**PROJECT NOTES:**

- PROJECT IS LOCATED IN LOS ANGELES COUNTY, CALIFORNIA SPANNING ACROSS CARSON CITY, LOS ANGELES, AND LONG BEACH.
- PROJECT DOCUMENTS PREPARED ARE HIGH LEVEL DESIGN AND ARE NOT FOR BID PURPOSES OR FOR CONSTRUCTION. THIS DESIGN IS CONCEPTUAL IN NATURE AND MAY CHANGE AS THE DESIGN PROGRESSES TO A CONSTRUCTION ITERATION.
- THIS DESIGN IS FOR A 220KV INTERCONNECTION TO SCE, WITH TWO COMMUNICATIONS CABLES AS 'DIVERSE FIBER' AS DIRECTED BY SCE FOR THE INTERCONNECTION REQUIREMENTS.
- THIS PROJECT IS DESIGNED TO MEET ALL NESC AND GO95 REQUIREMENTS.
- POLES ARE REQUIRED TO BE A MINIMUM OF 30-FEET FROM THE CENTERLINE OF RAILROAD TRACKS ON UPRR PROPERTY.
- CONDUCTORS ARE REQUIRED TO BE A MINIMUM OF 36-FEET ABOVE GROUND. THIS DESIGN HAS A MINIMUM CLEARANCE OF 75-FEET ABOVE GROUND OVER UPRR PROPERTY TO ALLOW FOR MAINTENANCE EQUIPMENT TO OPERATE ON THE PROPERTY.
- REFER TO THE PROJECT DESIGN BASIS AND CRITERIA MANUAL FOR ADDITIONAL PROJECT DETAILS.
- STRUCTURE DIAMETER INFORMATION IS NOT AVAILABLE AT THIS PROJECT STAGE.
- FAA FILINGS AND PROVISIONS HAVE NOT BEEN MADE FOR THIS PROJECT.
- POCO CONFIGURATION REQUIREMENTS TO BE DETERMINED BY SCE.
- REFER TO UNDERGROUND DESIGN PACKAGE UG-01 FOR DETAILS.
- DETAILED DESIGN SHALL MEET THE REQUIREMENTS CALLED OUT IN UPRR 'GUIDELINES FOR TEMPORARY SHORING'. SHORING PLANS AND CALCULATIONS SHALL BE SUBMITTED FOR REVIEW AND APPROVAL PRIOR TO CONSTRUCTION.
- FLAGGING WILL BE PERFORMED IN ADDITION TO CONSTRUCTION OBSERVATION FOR CONSTRUCTION WITHIN 25-FEET OF THE CENTERLINE OF THE NEAREST TRACK DURING CONSTRUCTION OF THE PROJECT.

Scale For Microfilming  
Millimeters  
Inches



**PRELIMINARY - NOT FOR CONSTRUCTION**

**BURNS  
MCDONNELL**  
9400 WARD PARKWAY  
KANSAS CITY, MO 64114  
816-333-9400  
Burns & McDonnell Engineering Co, Inc.  
LICENSEE NO. 000165

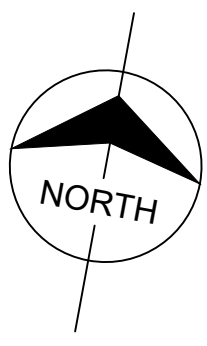
date	4/21/2023	detailed	J. PERKINS
designed	J. PERKINS	checked	A. ROOT



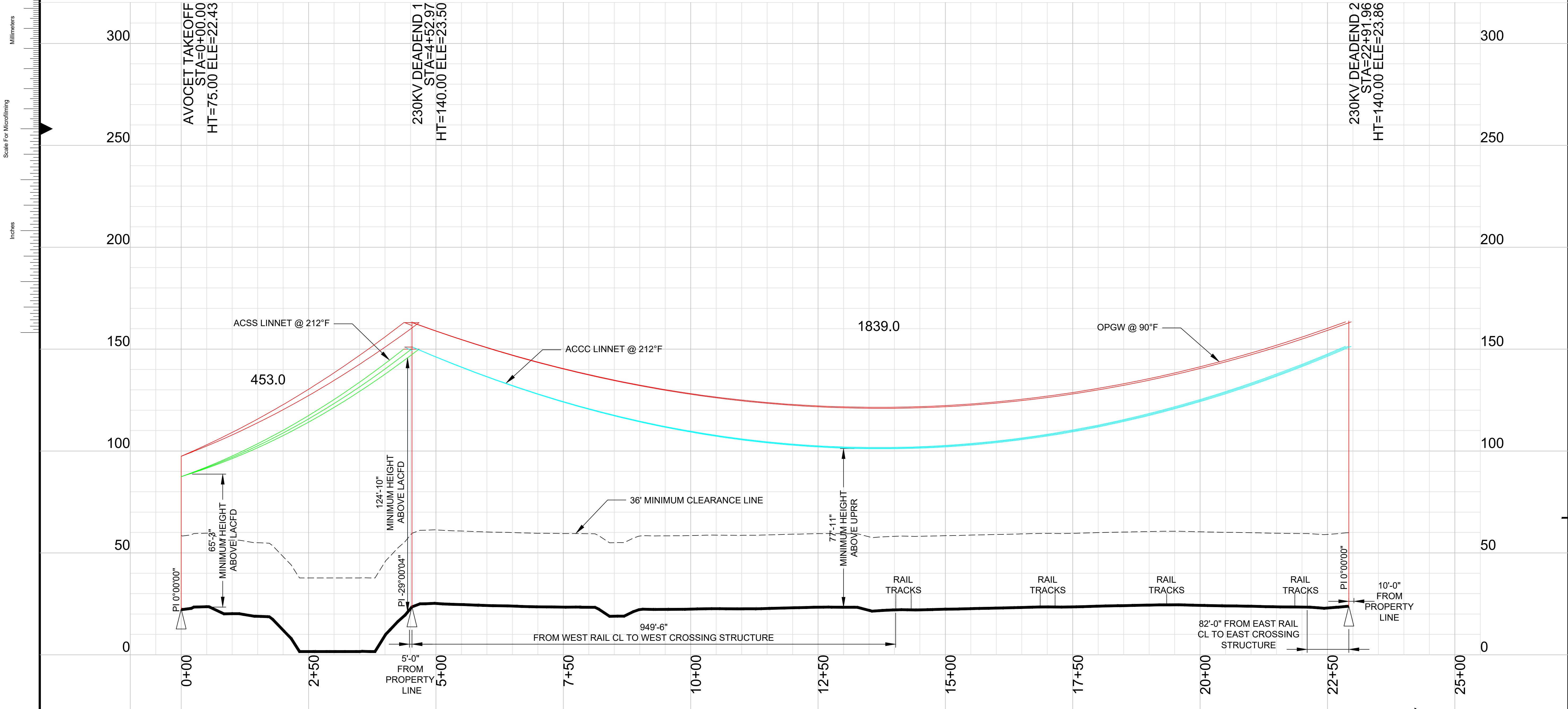
TENASKA AVOCET 220KV  
INTERCONNECTION DESIGN  
COVER SHEET

project	145220	contract	CONTRACT
drawing	<b>CU-001</b>	rev.	<b>3</b>
sheet	1	of	2 sheets
file	145220-CU-001_COVER.DWG		

no.	date	by	ckd	description
1	5/19/22	MPS	JG	PRELIMINARY DESIGN
2	12/15/22	JGC	AR	PRELIMINARY DESIGN
3	4/21/23	JCP	AR	PRELIMINARY DESIGN
4	5/26/23	JCP	AR	PRELIMINARY DESIGN



100.0 FT. HORIZ. SCALE  
25.0 FT. VERT. SCALE



**PRELIMINARY - NOT FOR CONSTRUCTION**

**BURNS MCDONNELL**  
9400 WARD PARKWAY  
KANSAS CITY, MO 64114  
816-333-9400  
Burns & McDonnell Engineering Co, Inc.  
LICENSEE NO. 000165

date	5/26/2023	detailed	J. PERKINS
designed	J. PERKINS	checked	A. ROOT



**TENASKA AVOCET 220KV INTERCONNECTION DESIGN PLAN & PROFILE DRAWING**

project	145220	contract	CONTRACT
drawing	<b>CU-002</b>	rev.	<b>3</b>
sheet	2	of	2
file	145220-CU-002_P&PS.DWG		